

Nowata County, OK Recreational Paradise

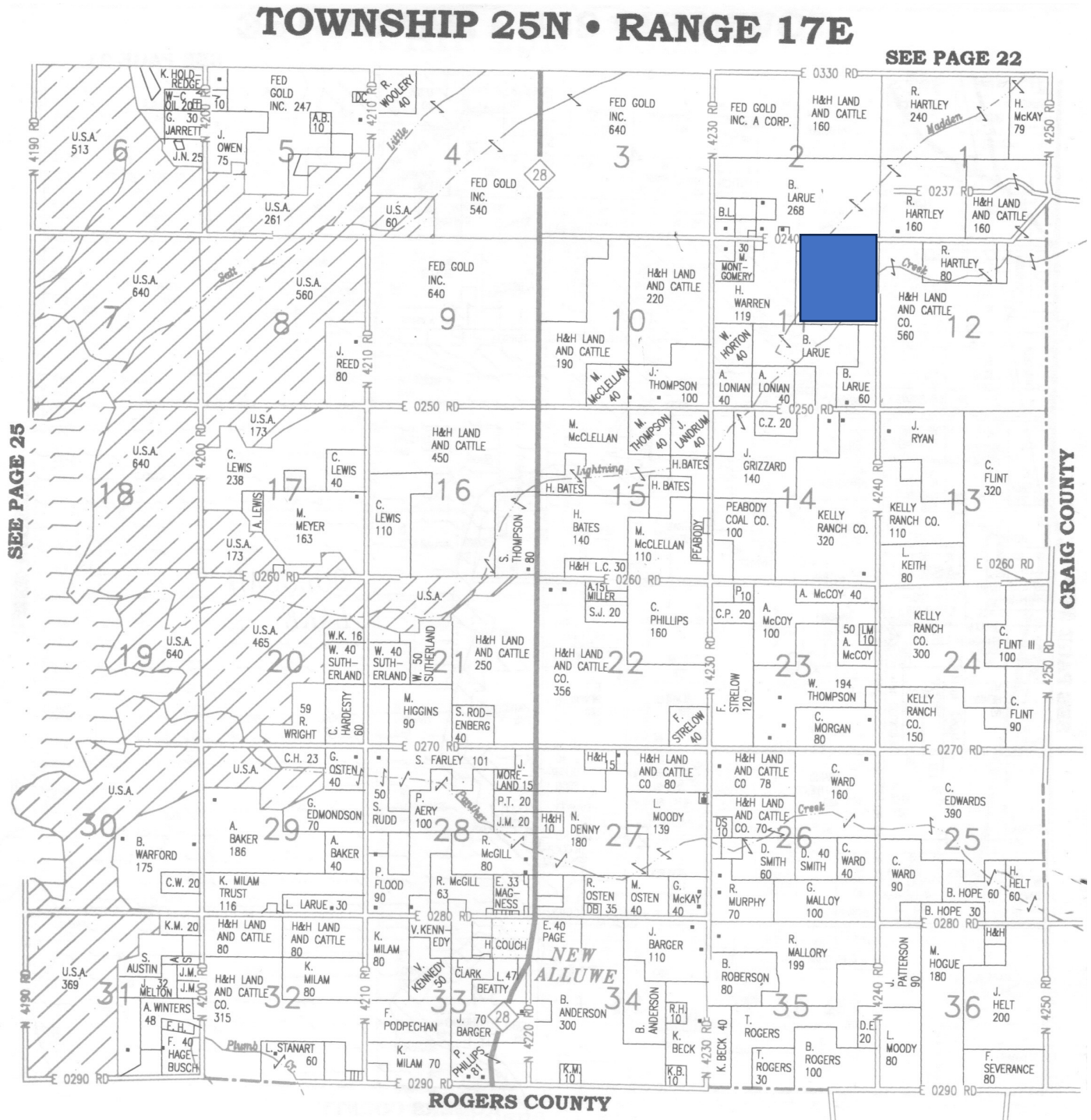
120 acres, with two creeks, beautiful ponds, open grassland & timberland. Hunting, fishing, wonderful camping or cabin sites.



JC Barr, Broker 405-245-7585
Jcbarrauctions.com



Located in Nowata County and just a mile west of the Craig County line in Section #11 in T25N-17E. Driving Directions: From New Alluwe go 4 miles North on Hwy 28 to county road #240, then 1 ½ mi. East. Property on South side (blue gate).



No minerals, surface only. Price is \$4,000/acre. The seller intends to keep the 40 ac tract in the SE corner of this quarter, as they need the water for livestock.



Two creeks cross the property, Madden Creek to the north and Lightning Creek to the south.



Madden Creek
crosses county road
#240 on the north
side of the 120 acre
tract then meanders
across both tracts.