

Falling Ranch

13 – T26N – 18E Craig County, OK
200 +/- acres with House & Barn



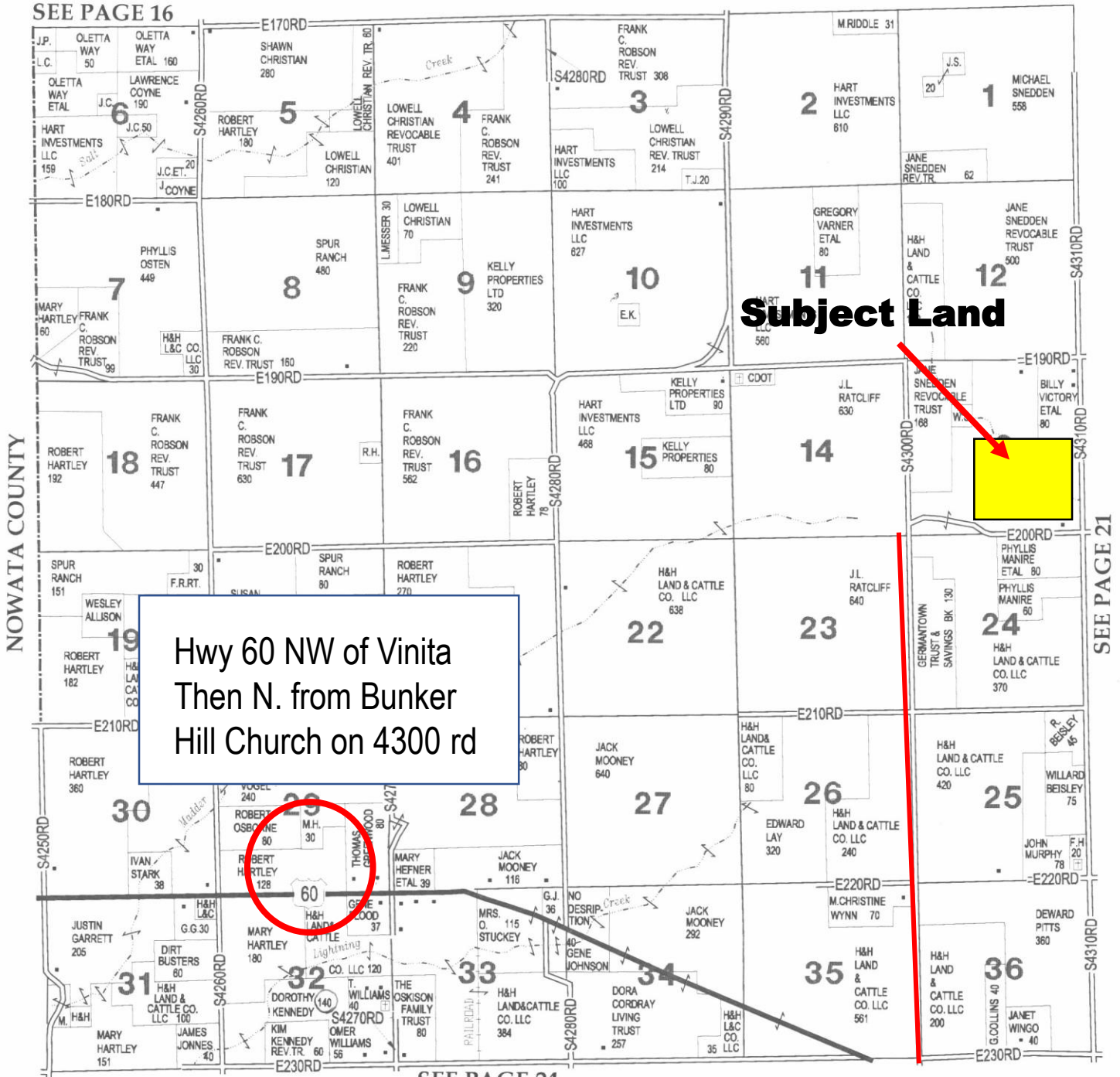
The ranch has some bottom land that transitions to higher elevations and into the woods and timber in the NE corner of the property. There are ponds and a strip pit that provide water for both livestock, wildlife and recreation. The property has good access with county roads on two sides and it sits just three miles north of Hwy 60.

Good grazing and hunting in a nice package with a house and barn.

Priced at \$475,000

TOWNSHIP 26N • RANGE 18E

SEE PAGE 16



NOWATA COUNTY

SEE PAGE 21

SEE PAGE 24



The Falling Ranch is a great hunting & recreation property with a balance of open land, woods and cover. There are several strip pits for fishing and the access is excellent just off county roads and North of Hwy 60 three miles.

Use the house for a weekend cabin or a rental. Some updates have been made to the house with new windows and Central AC.

For Showing or Info Contact the Broker
JC Barr
405-245-7585
jakebarr1954@gmail.com