



Nowata County

250 +/- acres on the West side of Hwy 28 & just North of Alluwe, OK. Excellent access. Good fence, water & grass. Feed bunks, Squeeze chutes & Creep Feeders don't stay with surface.

Nowata County

378 +/- acres on the East side of Hwy 28 & just North of Alluwe, OK. Set of corrals, Good fence, water & grass. Access is good with Hwy and gravel county road frontage.



\$1,800 per acre

For more info. or showing contact:

JC Barr, Broker

405-433-5636

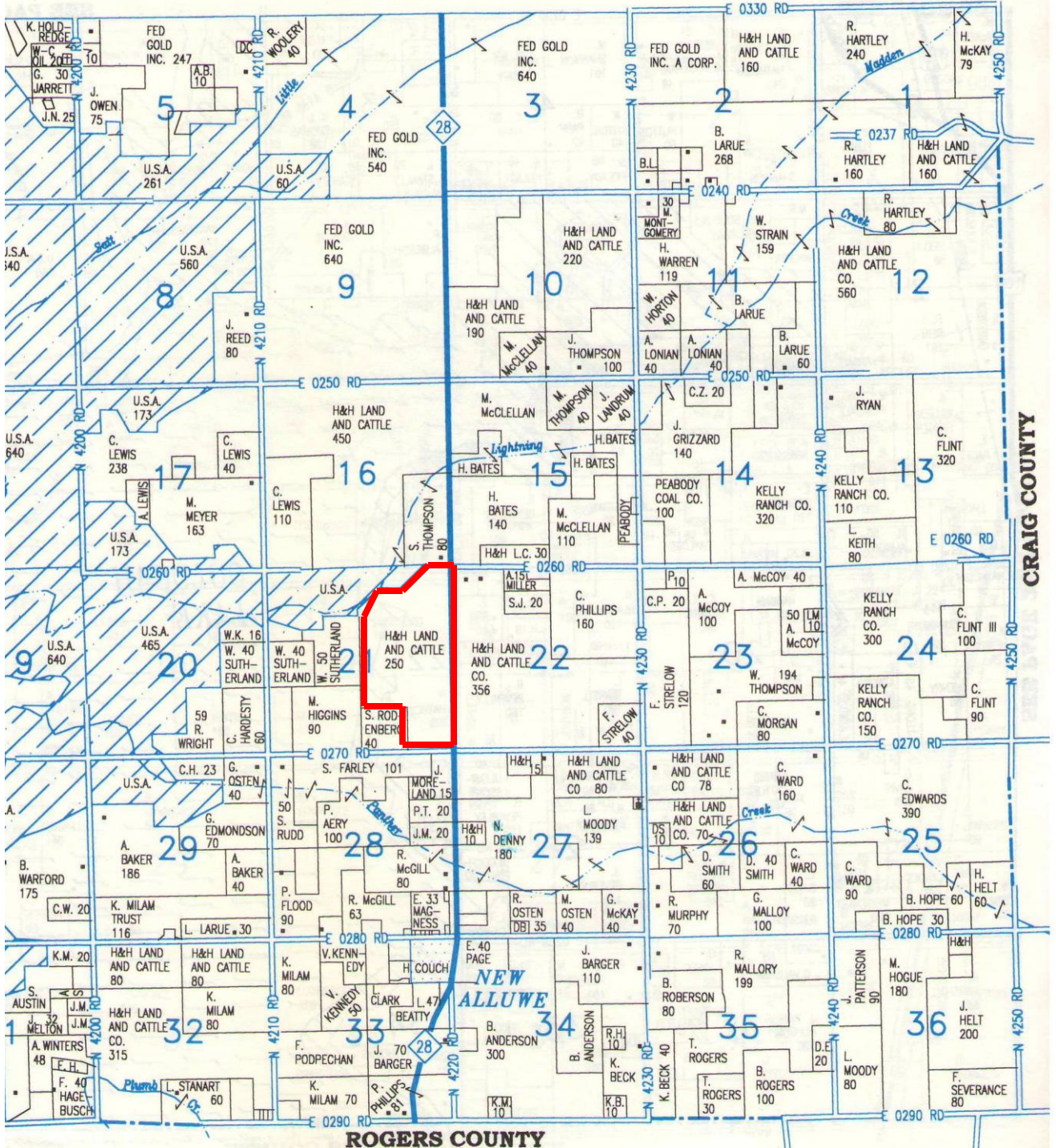
405-245-7585 cell

jakebarr1954@gmail.com

Nowata County

TOWNSHIP 25N • RANGE 17E

SEE PAGE 22

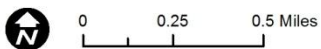
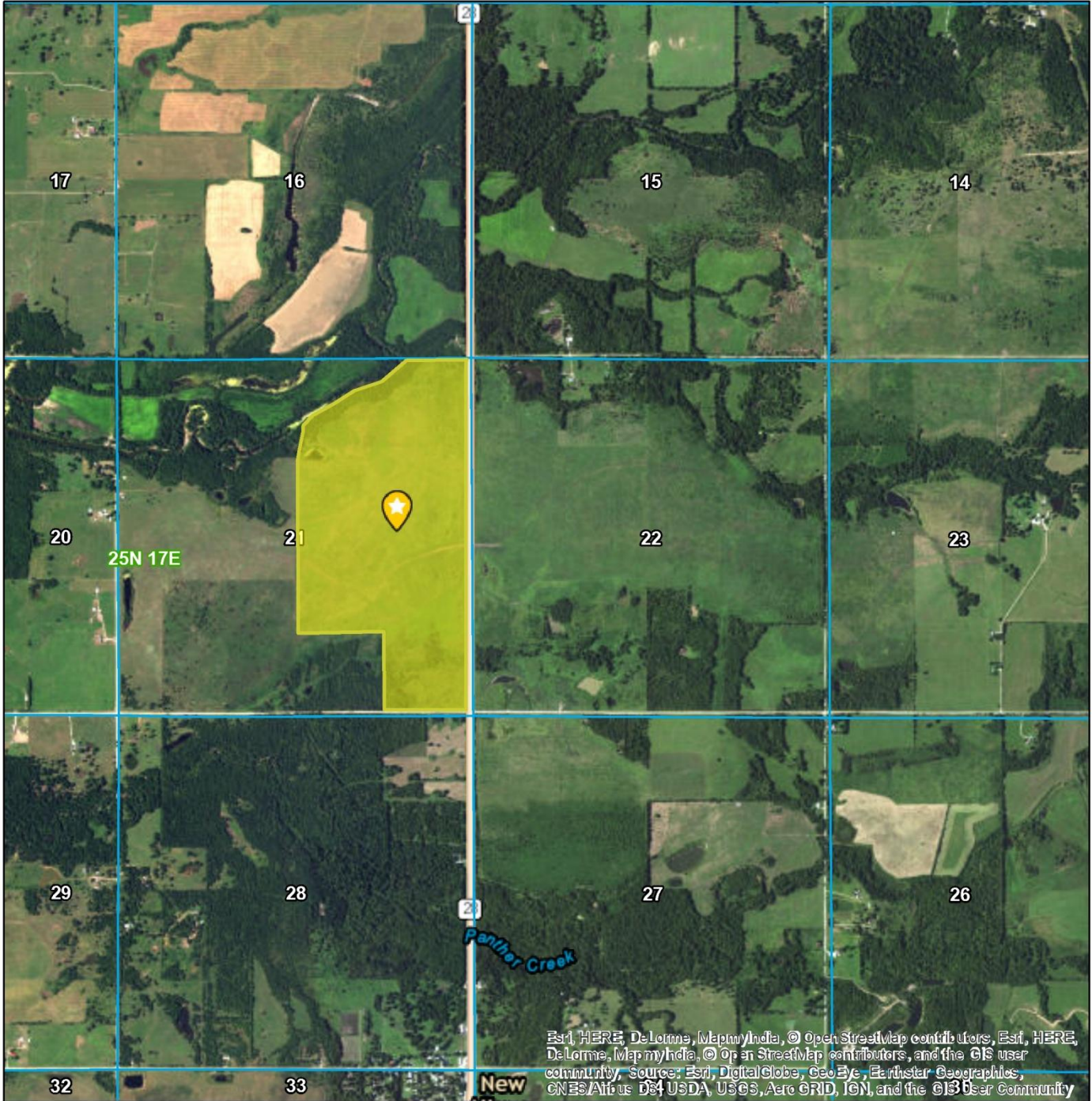


ROGERS COUNTY

Powered by



Hartley 250 ac



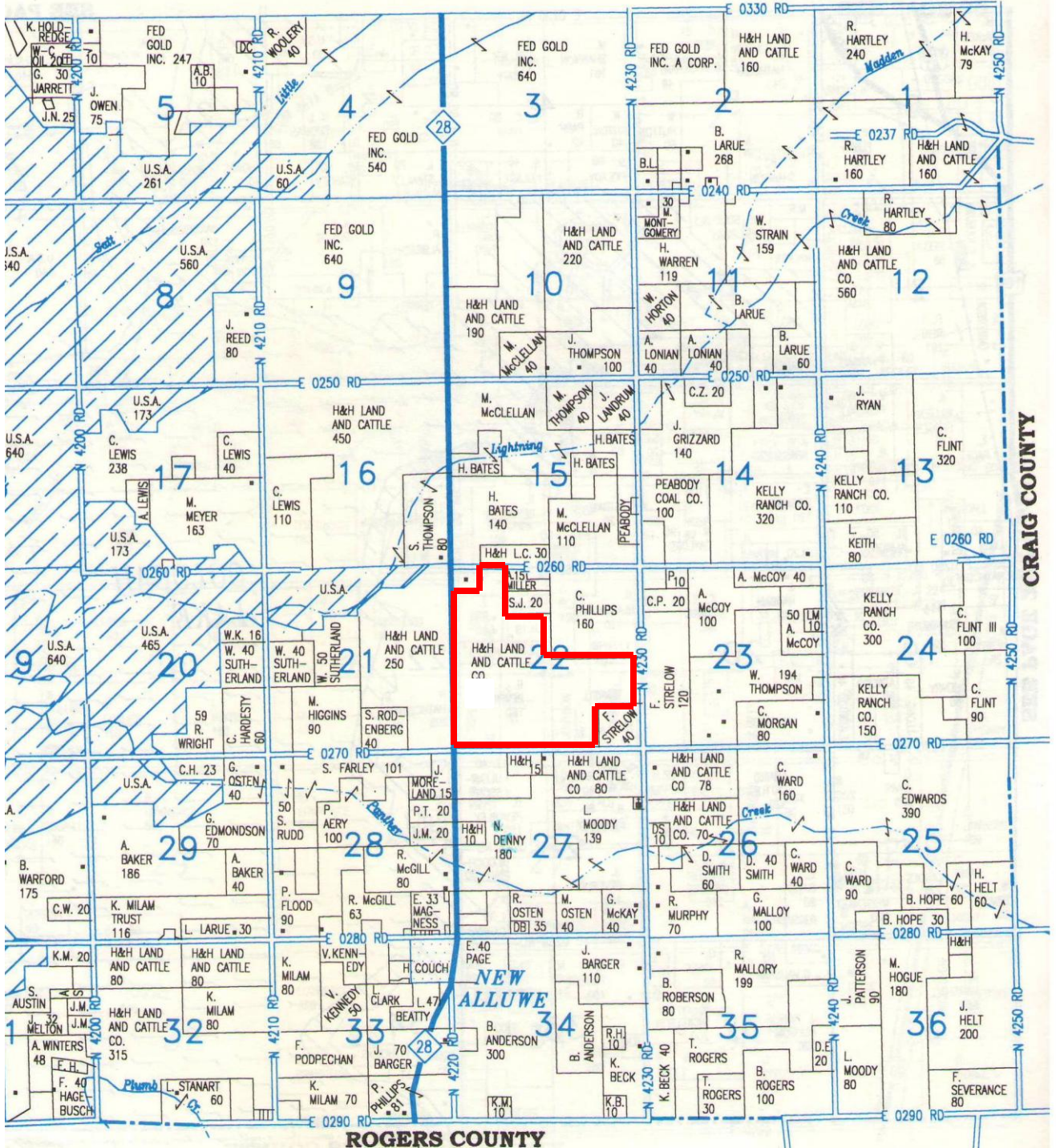
Boundary Lines Are Estimates. Map For Illustration Only



Nowata County

TOWNSHIP 25N • RANGE 17E

SEE PAGE 22



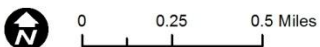
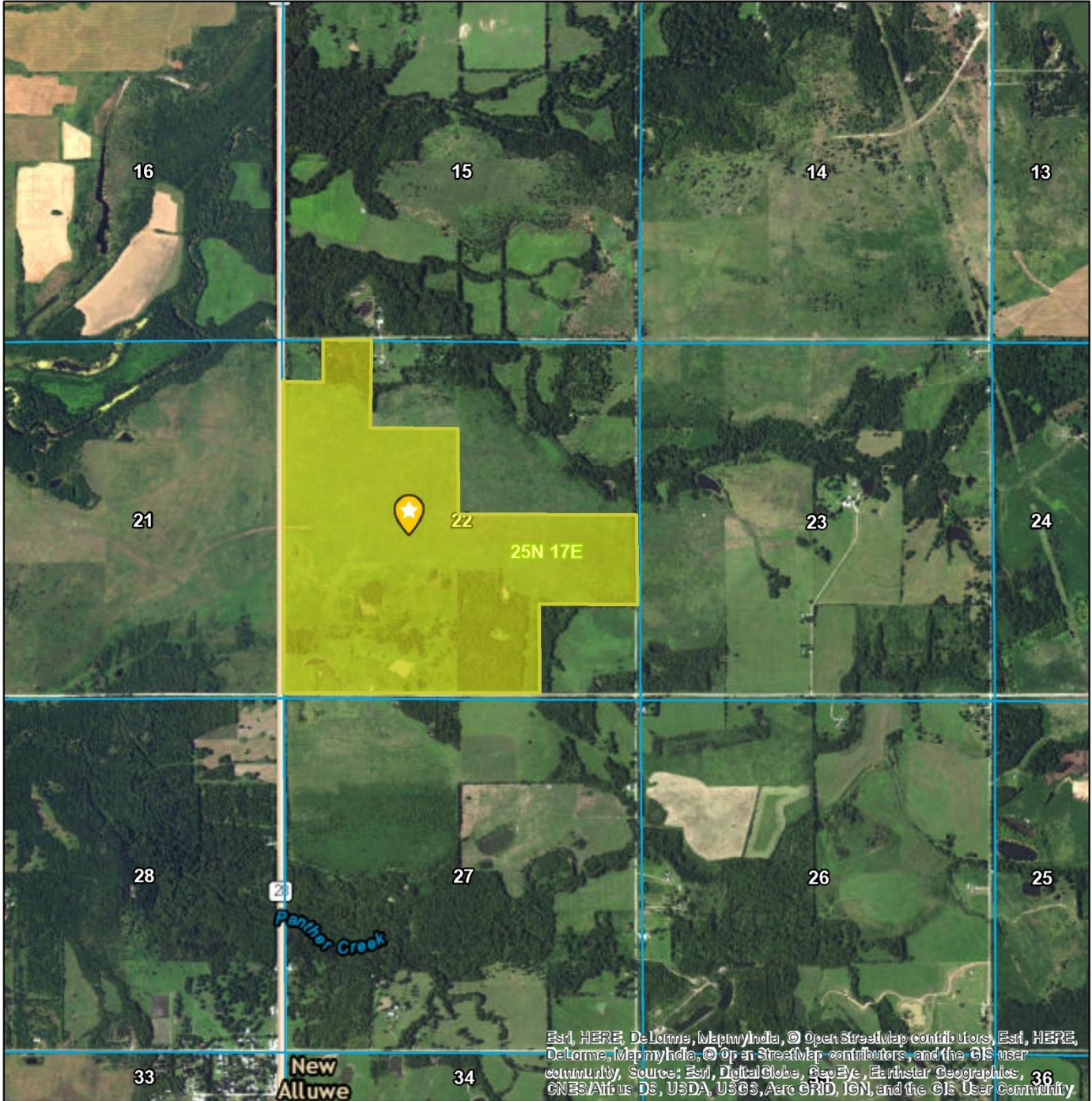
CRAIG COUNTY

ROGERS COUNTY

Powered by



Hartley 378 ac



Boundary Lines Are Estimates. Map For Illustration Only

