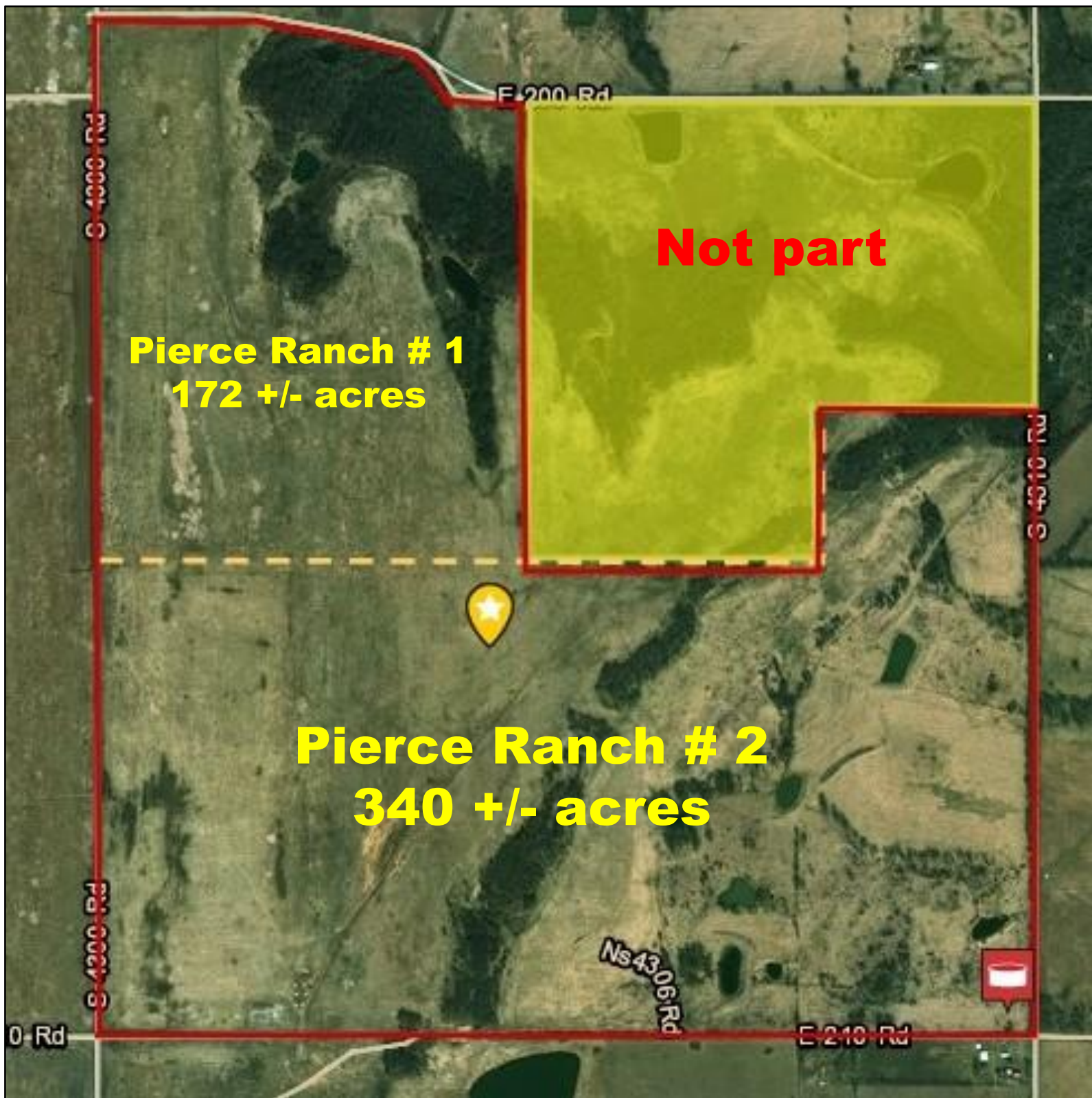


The Pierce Ranch # 1 is 172 +/- acres of good grass. There are three ponds and good county roads on two sides. Priced at \$ 344,000.



The Pierce Ranch # 2 is 340 +/- acres of good grass. There are three ponds and there's rural water in the SE corner. This property has frontage on three sides. 4300 west, 210 south & 4310 East Priced at \$680,000.

The location for the Pierce ranches is excellent with two miles of a good county gravel road just north of Hwy 60.

## TOWNSHIP 26N • RANGE 18E

SEE PAGE 16

