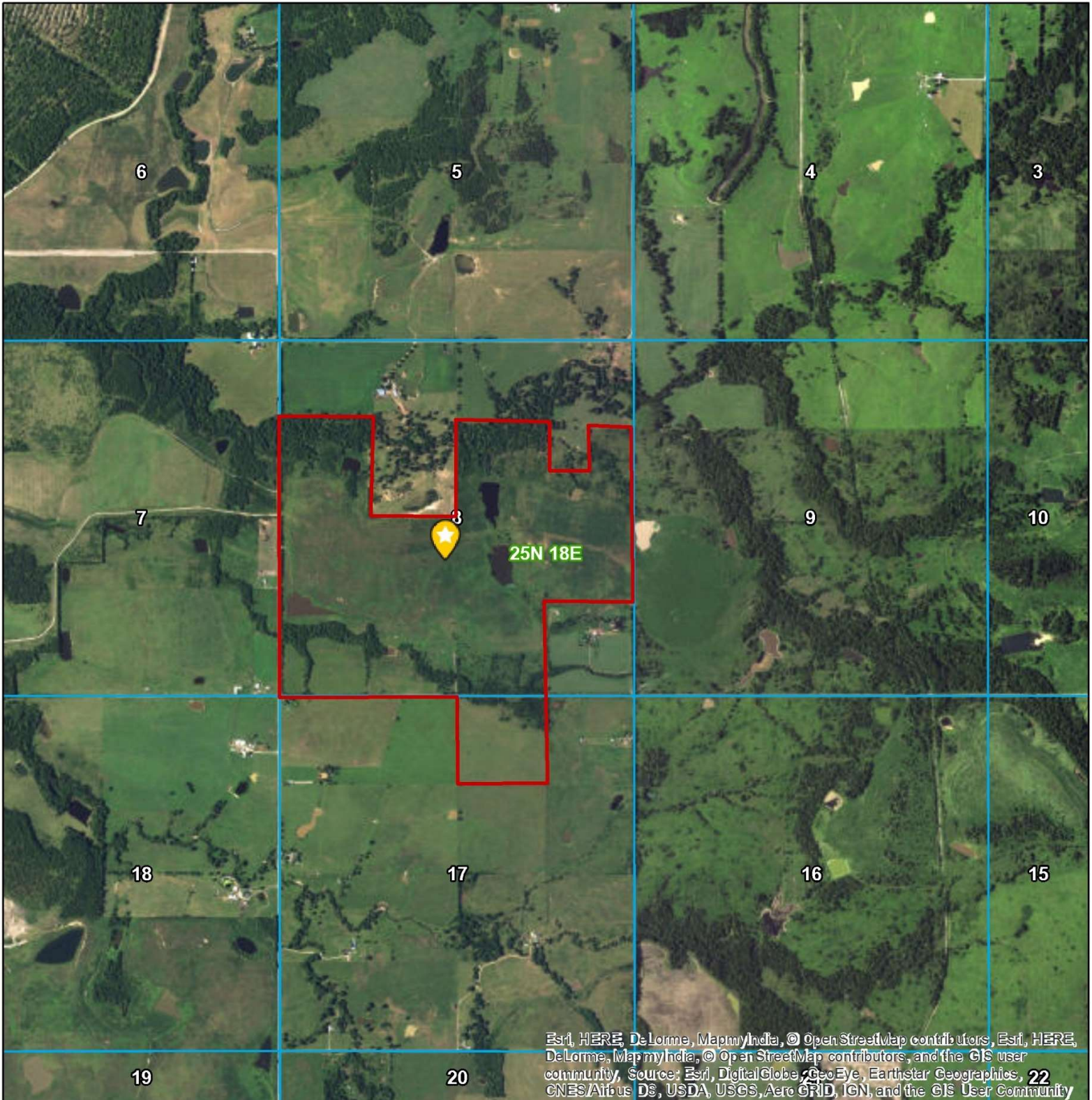


Powered by



# Three Hills Ranch # 1

Section 8 & 17 T25N-R18E Craig County



Esri, HERE, DeLorme, MapmyIndia, © OpenStreetMap contributors, Esri, HERE, DeLorme, MapmyIndia, © OpenStreetMap contributors, and the GIS user community, Source: Esri, DigitalGlobe, GeoEye, Earthstar Geographics, CNES/Airbus DS, USDA, USGS, AeroGRID, IGN, and the GIS User Community



0 0.25 0.5 Miles

Boundary Lines Are Estimates. Map For Illustration Only



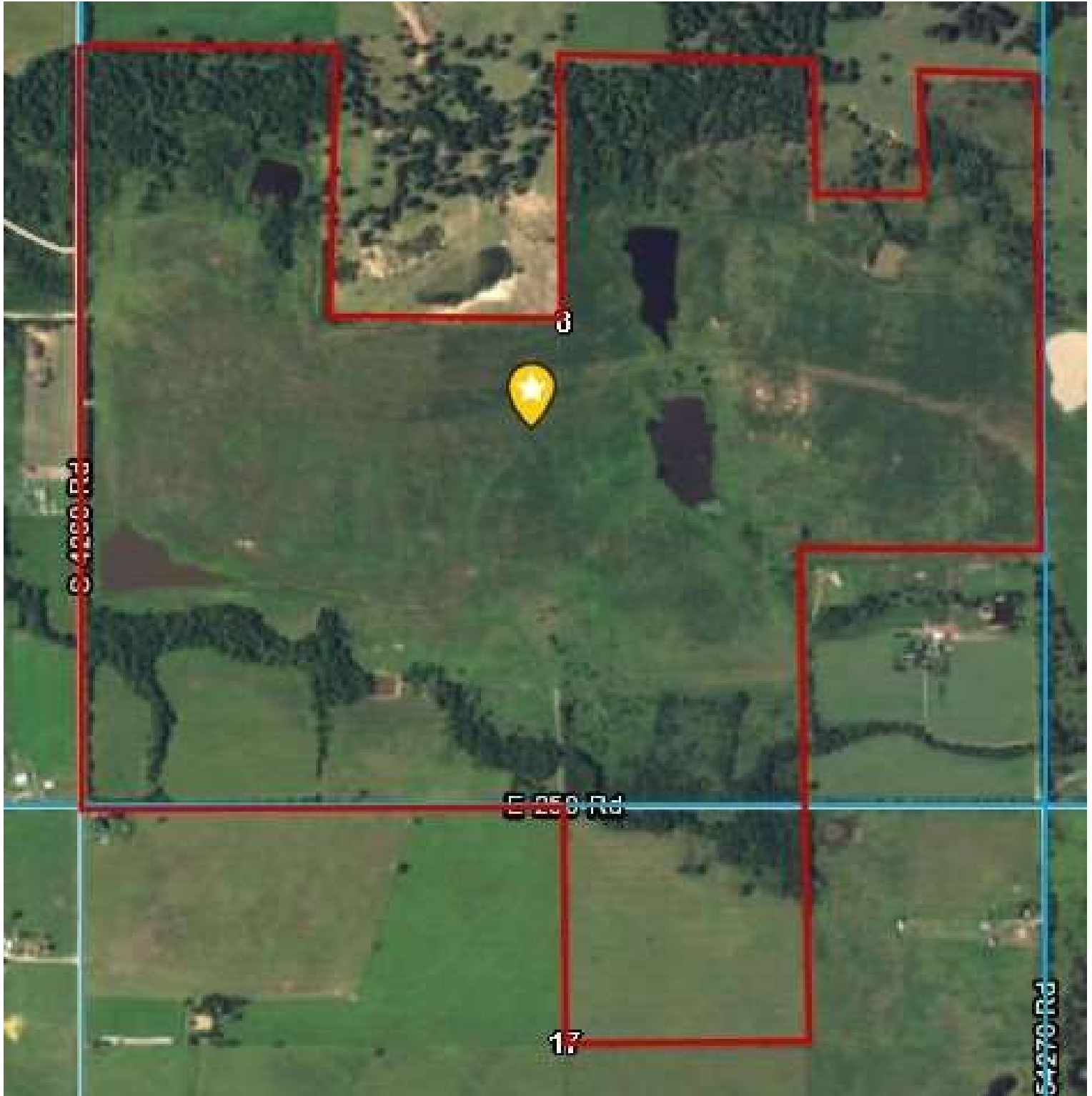
Here's a good cattle place with some bottom land that transitions to upland and several places that you can put up hay. 430 +/- acres that has good access from gravel county roads. Good grass, water and fence. Priced at \$860,000 surface only.

**For information or showing contact the Broker.**

**JC Barr, 405-245-7585**

**[jakebarr1954@gmail.com](mailto:jakebarr1954@gmail.com)**

**Jcbarrauctions.com**







# TOWNSHIP 25N • RANGE 18E

