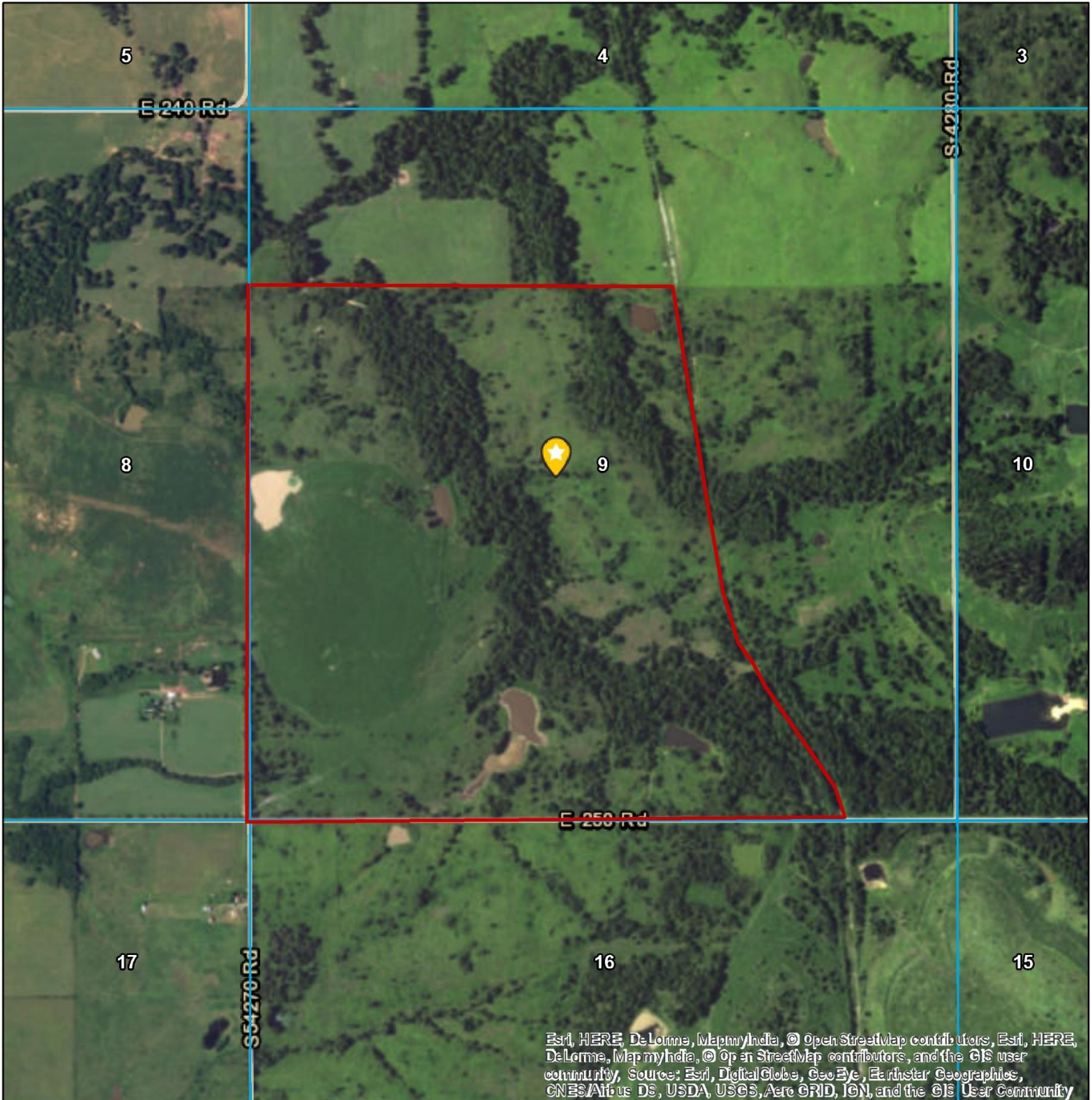


Powered by



# Three Hills #2 Aerial plat

Section 9 - T25N - 18E Craig County



Esri, HERE, DeLorme, MapmyIndia, © OpenStreetMap contributors, Esri, HERE, DeLorme, MapmyIndia, © OpenStreetMap contributors, and the GIS user community, Source: Esri, DigitalGlobe, GeoEye, Earthstar Geographics, CNES/Airbus DS, USDA, USGS, AeroGRID, IGN, and the GIS User Community



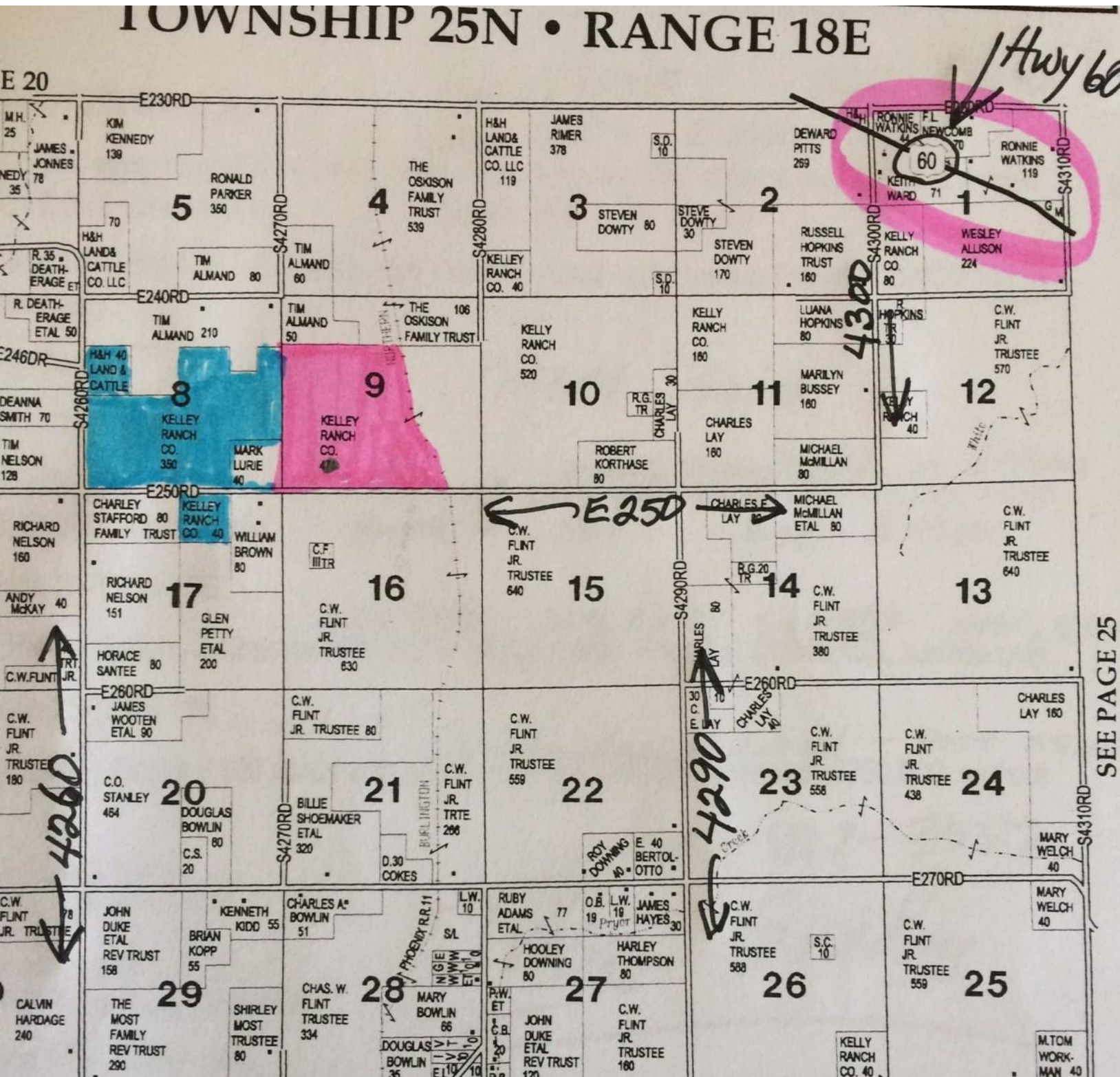
0 0.1 0.2 Miles

Boundary Lines Are Estimates. Map For Illustration Only

Powered by



Here are the two Three Hills Ranches #1 in Blue and #2 in pink. Three Hills #2 is the best hunting land with a draw running North to south through the entire property. There's cover, woods and open land and the property just to the East (the old railroad tracks are taken up) is High Fenced. The access is very good from gravel county roads and it's just 4 miles SW of Hwy 60 and about 11 miles NW of Vinita. If you want a really nice hunting ranch this is it.





If your serious about owning a nice hunting ranch take a look at this one. Not only does this ranch have great hunting but you can run cattle or rent for cattle and get some income to help offset the cost. The access is great, the land is pretty and within easy driving distance of Tulsa. This ranch is big enough that with some feeders several people can hunt. 340 +/- acres Priced at \$680,000 surface only.

For more information or showing contact the Broker.

**JC Barr 405-245-7585**

**[jakebarr1954@gmail.com](mailto:jakebarr1954@gmail.com)**

**Jcbarrauctions.com**